

Primary 4

Curriculum Briefing

Monday, 7 Feb 2022



WELCOME PARENTS AND GUARDIANS



Mr Dennis Yap, Principal

PROGRAMME OUTLINE

1.	Curriculum Matters (See Information Annex)
2.	Assessment Matters (See Information Annex)
3.	Student Matters - ABC
4.	Subject Based Banding 2022
5.	Questions and Answers

Primary 4 Form Teachers

Class	Form Teacher	Email
4A	Mr M Prakash	m_prakash@schools.gov.sg
4C	Ms Oh Pei Ying	oh_pei_ying@schools.gov.sg
	Ms Chan Soo Keng, Victoria	chan_soo_keng@schools.gov.sg
4D	Mr Adrian Liang (LH/ICT)	Adrian_liang@schools.gov.sg
	Ms Chen Soo Juan	ding_soo_juan@schools.gov.sg
4E	Ms Lim Xin Wan	lim_xin_wan@schools.gov.sg

Primary 4 Form Teachers

Class	Form Teacher	Email
4J	Mr Mohd Hafiizh (SH/PE)	Mohammed_hafiizh_dzulkifli@schools.gov.sg
	Mdm Nur Shafiqah	Nur_shafiqah_rosland@schools.gov.sg
4O	Mdm Murni Alidawati	murni_alidawati@schools.gov.sg
4P	Ms Nur Alisa	nur_alisa_zanal@schools.gov.sg
4R	Ms Ng Hui Jie Rimes	ng_hui_jie_rimes@schools.gov.sg

**ABCS
FOR OUR
PCPS PUPILS**



ATTITUDES

- Attitudes towards learning / life
 - Resilience (coping and not giving up easily)
 - Endeavours to give one's best.
 - Accountability (responsible for one's actions and words)
 - Punctuality (for school, for lessons and for submission of homework)
 - Teachability (open to feedback and to learn)

BEHAVIOURS

- Regular attendance in school
- Self-awareness and self-management
- Social awareness and relationship management
- Showing care and concern to self, peers and others
- Respectful towards parents, elderlies, teachers, peers and even on social media.
- Coming up with routines for home for children such as organisation skills, sleep habits and diet

COMMUNICATIONS

- Students – Parents
- Students – Teachers / Adults
- Students – Students
- Parents – Teachers / School Staff
- The language, words and tone our pupils would use in their interactions with others.

SUBJECT BASED BANDING

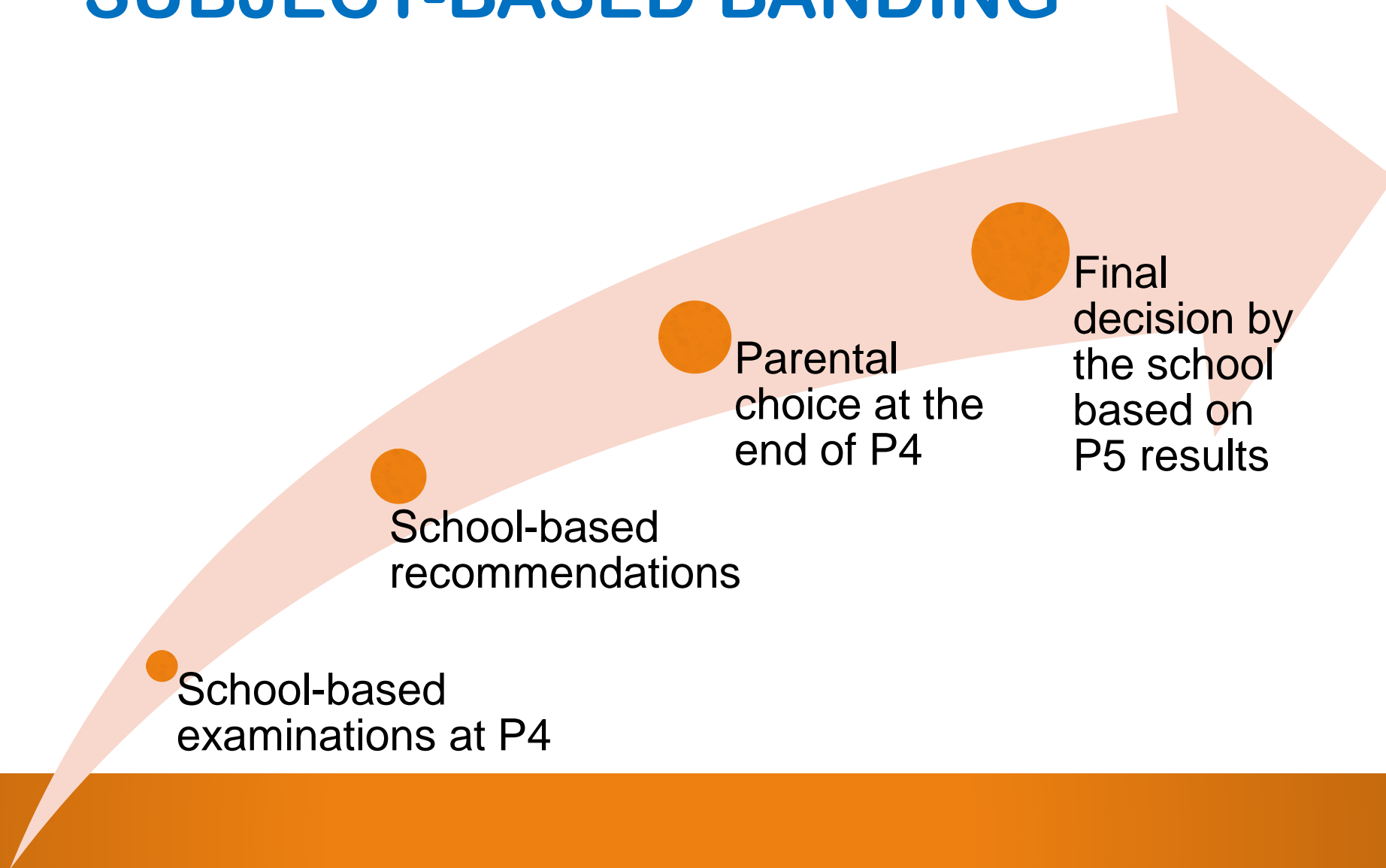
SUBJECT-BASED BANDING

- Provision of the option of a combination of standard and foundation subjects
- Caters to the different aptitudes, capabilities and talent of each child
- Help each child to realise his/her potential, based on his/her interests and strengths

SUBJECT-BASED BANDING

- Students are offered subjects which they have specific strength in at Standard level
- School will make recommendations of subject combinations based on the child's academic performance.

SUBJECT-BASED BANDING



SUBJECT-BASED BANDING

@ PRIMARY 4

Student sits for school-based examinations

School recommends a subject combination based on the student's results.

Parents fill up an option form indicating the preferred combination.

@ PRIMARY 5

Student takes subject combination chosen by parents

Higher Mother Tongue Language is also available.

School assesses student's ability to cope with the current subject combination at the end of the year. Adjustments to the number of standard and foundation subjects can be made, if necessary.

@ PRIMARY 6

Student takes subject combination decided by his school and sits for the Primary School Leaving Examination (PSLE) at the end of Primary 6.

**STUDENTS WITH SIMILAR SCORES
IN EACH SUBJECT WILL BE GROUPED
INTO THE SAME ACHIEVEMENT LEVEL**

- There will be 8 Achievement Levels (ALs), with AL1 being the best.
- A student's AL for each subject will reflect his level of achievement, rather than how he has performed relative to his peers.

PER SUBJECT
AL 1 (BEST)
AL 2
AL 3
AL 4
AL 5
AL 6
AL 7
AL 8 (UNGRADED)

WHY 8 ACHIEVEMENT LEVELS?

- This offers a good balance.
- It reduces fine differentiation between students while still giving parents and educators a gauge of a student's progress at the end of primary school.
- Students can then be matched to suitable academic programmes in secondary schools.

PER SUBJECT
AL 1 (BEST)
AL 2
AL 3
AL 4
AL 5
AL 6
AL 7
AL 8 (UNGRADED)

REFERENCE RAW MARK RANGES

- To guide school-based assessments, we will provide reference raw mark ranges for each AL.
- These are based on learning objectives of the curriculum.

Considerations

- To have educationally meaningful differentiation of students.
- At the top ALs, the ranges are narrower as the PSLE is designed to show what students can do – on average, about half of the students will score AL4 or better.

AL	RAW MARK RANGE
1	≥ 90
2	85 – 89
3	80 – 84
4	75 – 79
5	65 – 74
6	45 – 64
7	20 – 44
8	< 20

FOUNDATION-LEVEL SUBJECTS WILL ALSO BE SCORED ON ACHIEVEMENT LEVELS

- Foundation-level subjects are designed to support a small number of students who may not be able to cope with Standard-level subjects.
- This enables them to focus on building up strong fundamentals so that they are better prepared for secondary school.
- This way, the student will also build confidence to pursue learning at a level suitable for them.







Grades for Foundation	Foundation Raw Mark Range	Equivalent Standard Level AL
A	75 - 100	6
B	30 - 74	7
C	< 30	8

USE OF HCL FOR ADMISSION INTO SAP SCHOOLS

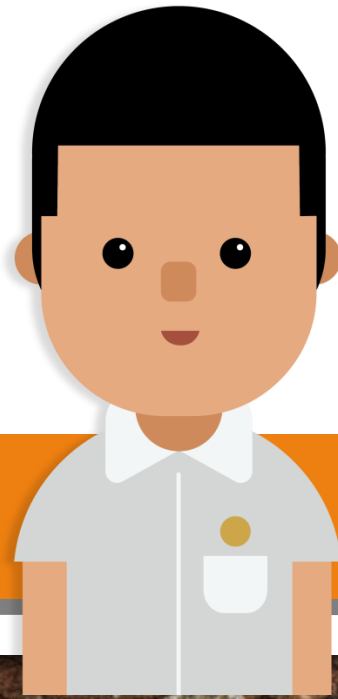


THIS HCL POSTING ADVANTAGE FOR ENTRY TO SAP SCHOOLS WILL CONTINUE

- Students will be ranked taking into account their performance in HCL.
- This posting advantage applies before the tie-breakers for S1 posting.

1st		7	NO HCL
2nd		8	DISTINCTION
3rd		8	MERIT
4th		8	PASS
5th		8	NO HCL
6th		9	DISTINCTION

ELIGIBILITY FOR SECONDARY SCHOOL HIGHER MOTHER TONGUE LANGUAGE (HMTL)



ELIGIBILITY FOR HMTL IN SECONDARY SCHOOLS

- The eligibility criteria for taking HMTL is intended to ensure that students can cope with the higher academic load, and takes reference from the current criteria.

ELIGIBILITY CRITERIA FOR SECONDARY SCHOOL HMTL

(i) PSLE Score of 8 or better

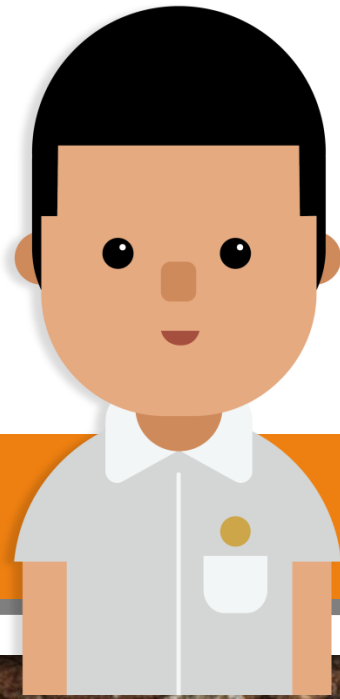
OR

(ii) PSLE Score of 9 to 14 inclusive; and attain

- AL1 / AL2 in MTL or
- Distinction / Merit in HMTL

- For students who do not meet the above criteria, secondary schools will continue to have the flexibility to offer HMTL to students, if they are assessed to have high ability and interest in MTL and are able to take HMTL without affecting their performance in other subjects.

QUESTIONS AND ANSWERS



MODES OF COMMUNICATION

- Email
- Student's Handbook
- Contact number: 63857339 (General Office)
- Newsletters and circulars will be published on Parent Gateway
- School Website:

<http://punggolcovepri.moe.edu.sg/>

**THANK YOU AND
HAVE
A GOOD DAY !**