



Primary 5

Curriculum Briefing

Tuesday, 8 March 2022





Welcome

Content Outline

1.	Student Well-Being Matters – ABC
2.	Subject Based Banding (End of Primary 5)
3.	Achievement Level Scoring System and PSLE
4.	Direct School Admission
5.	Question and Answer

ABCs
For Our
PCPS students



Attitudes

- Attitudes towards learning / life
 - Punctuality (for school, for lessons and for submission of homework)
 - Accountability (responsible for one's actions and words)
 - Teachability (open to feedback and to learn)
 - Endeavours to give one's best.
 - Resilience (coping and not giving up easily)

Punctuality

- Encourage our students to be early and punctual for school.
- Students who are not in class by 7.30a.m. will be considered late.
- For persistent latecomers, students will be referred to the HOD Discipline and Student Management for further actions.

Behaviours

- Regular attendance in school
- Self-awareness and self-management
- Social awareness and relationship management
- Showing care and concern to self, peers and others
- Coming up with routines for home for children such as organisation skills, sleep habits and diet
- Respectful towards parents, elderlies, teachers and peers
- Respectful and responsible even on social media.

Attendance Matters

- **Medical Certificate or a letter** from parent/guardian is needed to account for child's absence. (Limit of 5 letters per semester)
- For matters pertaining to Covid-19, please reach out to the Form Teachers or school for clarifications.
- Call the General Office and leave a message for your child/ward's Form Teacher.
- Remind your child/ward to **pass** the MC or letter to the Form Teacher when he/she is back in school.

Communications

- Students – Parents
- Students – Teachers / Adults
- Students – Students
- Parents – Teachers / School Staff
- The language, words and tone our pupils would use in their interactions with others.
- Respectful and responsible communication over social media

Modes of Communication

- ❑ Email the Form Teachers or School
- ❑ Communication via Form Teachers' alternative platforms / modes of communication.
- ❑ Meeting with teachers (by appointments only)
- ❑ Student's Handbook
- ❑ Contact number: 63857339 (General Office)
- ❑ Newsletters and circulars will be published in **Parent Gateway**
- ❑ School Website:
<http://punggolcovepri.moe.edu.sg>

Communication School and Home

- If there is a change in your contact number, please inform the Form Teachers or call in the General Office to inform / update.

2022 PRIMARY 5

Name	Designation	Email
Mdm Ellia Mardiana Binte Rahmat	Form Teacher 5 Amber	ellia_mardiana_rahmat@schools.gov.sg
Mrs Melissa Chan	Form Teacher 5 Coral	melissa_lee_pei-ju@schools.gov.sg
Ms Loh Qiwen Angeline	Form Teacher 5 Diamond	loh_qiwen_angeline@schools.gov.sg
Ms Tang Yu Ying	Form Teacher 5 Emerald	tang_yu_ying@schools.gov.sg

Mr Yeo Yee Peng	Form Teacher 5 Jade	yeo_yee_peng@schools.gov.sg
Ms Munawarrah Sultana	Form Teacher 5 Opal ST English	munawarrah_sultana_unwar@schools.gov.sg
Ms Felicia Nah	Form Teacher 5 Pearl	nah_ya_rui_felicia@schools.gov.sg
Mdm Nur Sufriena Suhaini	Form Teacher 5 Ruby	nur_sufriena_suhaini@schools.gov.sg

Parents Gateway (PG App)

- Download the free Parents Gateway mobile app onto your mobile phones (available on iOS and Android platforms only) and perform a simple one-time on-boarding process if you have not done so.
- Parents are strongly encouraged to check the Parents Gateway regularly to stay engaged with the school.

Communication with External Stakeholders

- For communication with external stakeholders such as school dental services, school bookshop, school bus service, school uniform and Student Care Centre, please refer to the following for their contact details:
 - Page 8 of the Student Handbook
 - School Website (For Parents – Useful Links)

Student Well-Being

The background features a white space with abstract, overlapping blue geometric shapes on the right side. These shapes include various shades of blue, from light to dark, forming a dynamic, modern design.

Well - Being in School

Have conversations with your child at home on taking care of themselves and staying safe in school:

- Personal Grooming and hygiene
- Classroom Safety
- Canteen Safety
- Road Safety

Well - Being in School

Remind our children to take on responsibilities daily:

- ✓ Check and bring the TraceTogether Token.
- ✓ Check and bring working thermometer.
- ✓ Pack extra clean masks.
- ✓ Bring and drink from their own water bottles instead of drinking directly from the water coolers.
- ✓ Prepare money, pack for snack breaks / recess.

Well – Being at Home

Encourage your child to:

- ✓ Revise regularly.
- ✓ Reflect on his/her progress and challenges in school.
- ✓ Share his/her learning experiences with you.
- ✓ Work on their daily assignments (homework).
- ✓ Seek and ask for help to work in content / areas for improvement.
- ✓ Set aside time to exercise, rest, relax and bond with the family.

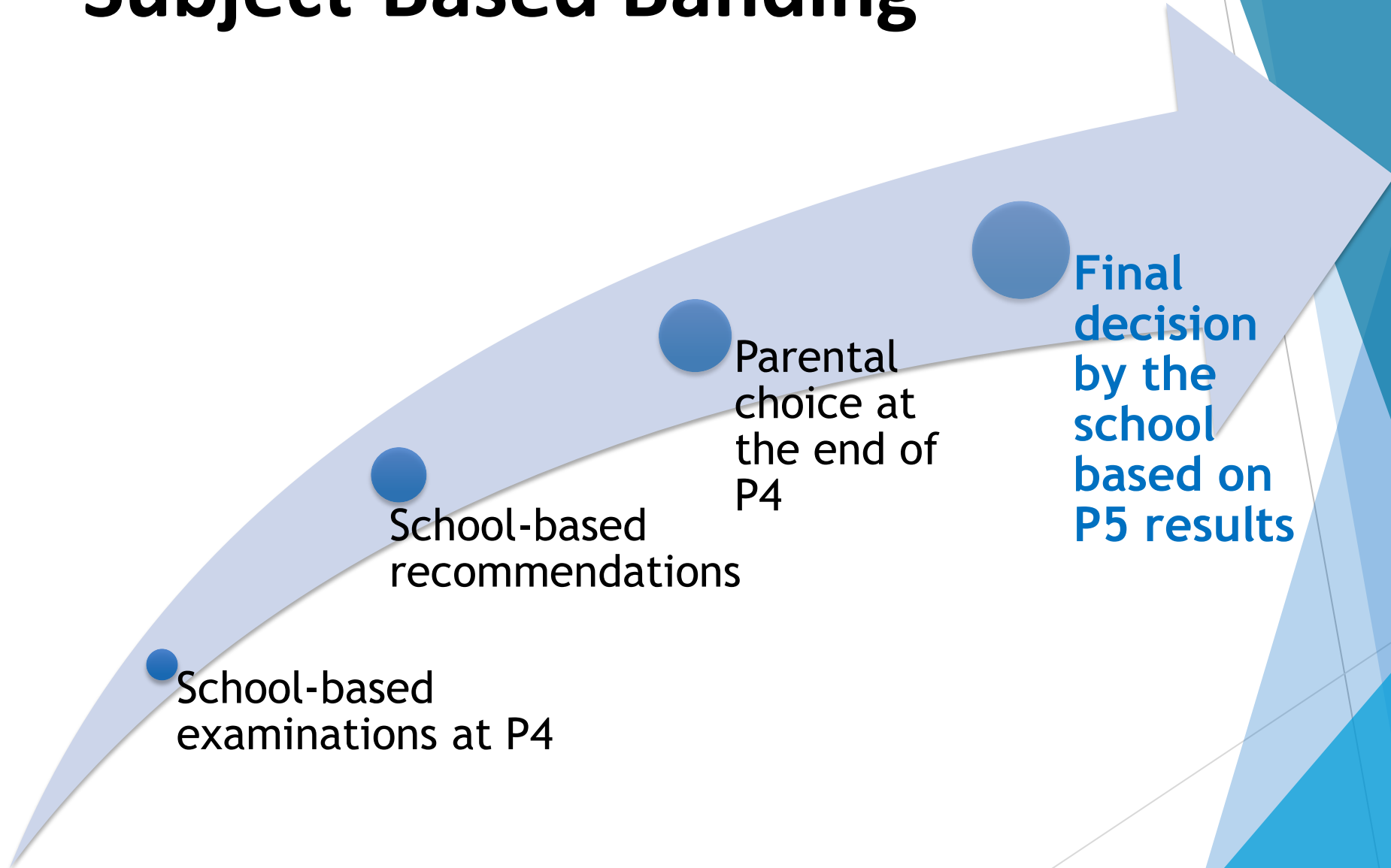
Well – Being at Home

- ✓ Engage in an active and open communication with the children's form and subject teachers. Stay updated and informed.
- ✓ Develop organisation and management skills in children. E.g. time management skill, setting up a time-table for work, revision and recreation.
- ✓ Ensure children get sufficient sleep, proper diet and affection.
- ✓ Check in regularly with them on how their school day has been and on their learning.
- ✓ Praise your child for any progress they have made!

Subject Based Banding

The background features abstract, overlapping geometric shapes in various shades of blue, ranging from light sky blue to deep navy blue. These shapes are primarily located on the right side of the frame, creating a modern, dynamic feel. The text is centered on the white background.

Subject-Based Banding



Subject-based Banding

@ PRIMARY 4

Student sits for school-based examinations

School recommends a subject combination based on the student's results.

Parents fill up an option form indicating the preferred combination.

@ PRIMARY 5

Student takes subject combination chosen by parents

English Language, Mathematics, Science and Mother Tongue Language are available at standard and foundation levels.

Higher Mother Tongue Language is also available.

School assesses student's ability to cope with the current subject combination at the end of the year. Adjustments to the number of standard and foundation subjects can be made, if necessary.

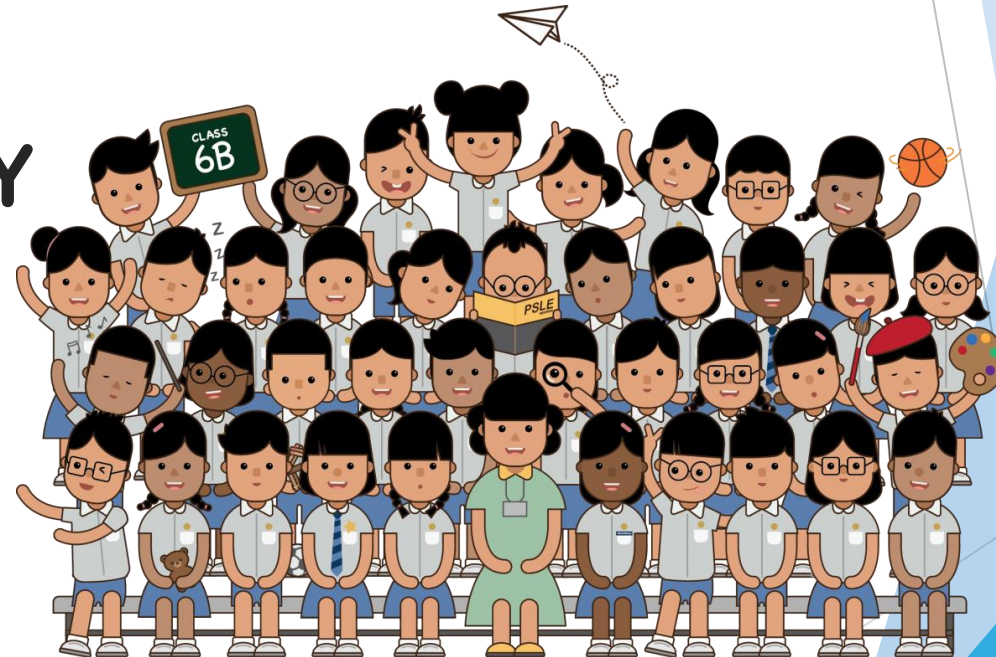
@ PRIMARY 6

Student takes subject combination decided by his school and sits for the Primary School Leaving Examination (PSLE) at the end of Primary 6.

Achievement Level Scoring System and PSLE

CHANGES TO THE PSLE SCORING & S1 POSTING

IT'S PART OF
A BIGGER STORY



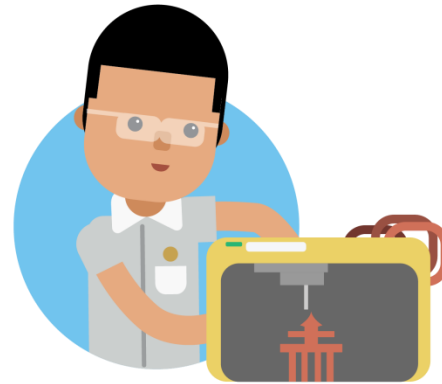
WHAT DO OUR CHILDREN NEED TO THRIVE IN THE FUTURE?



STRONG FOUNDATION

For example:

- Literacy
- Numeracy
- Social-emotional Competencies



21ST CENTURY COMPETENCIES

For example:

- Global awareness
- Critical and Inventive thinking
- Communication and Collaboration



VALUES

For example:

- Resilience
- Integrity
- Care

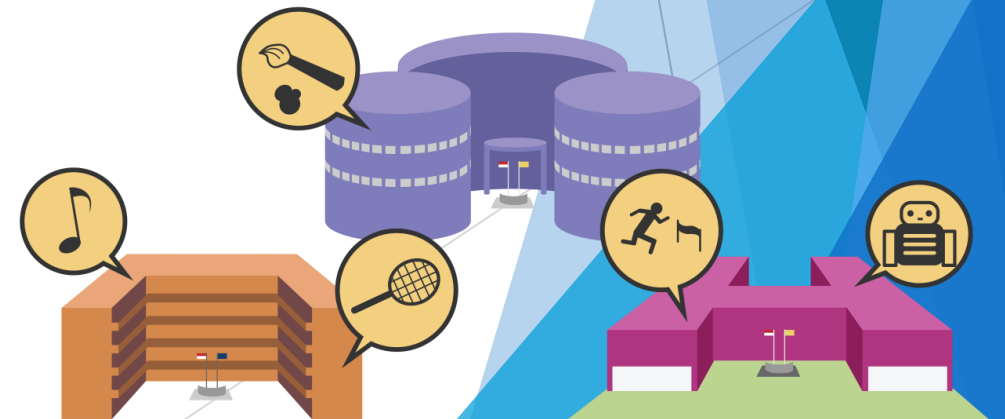
OUR EDUCATION SYSTEM AIMS TO:

NURTURE WELL-ROUNDED INDIVIDUALS

- Develop students holistically in every domain of learning
- Equip students with knowledge, skills, values and competencies for life

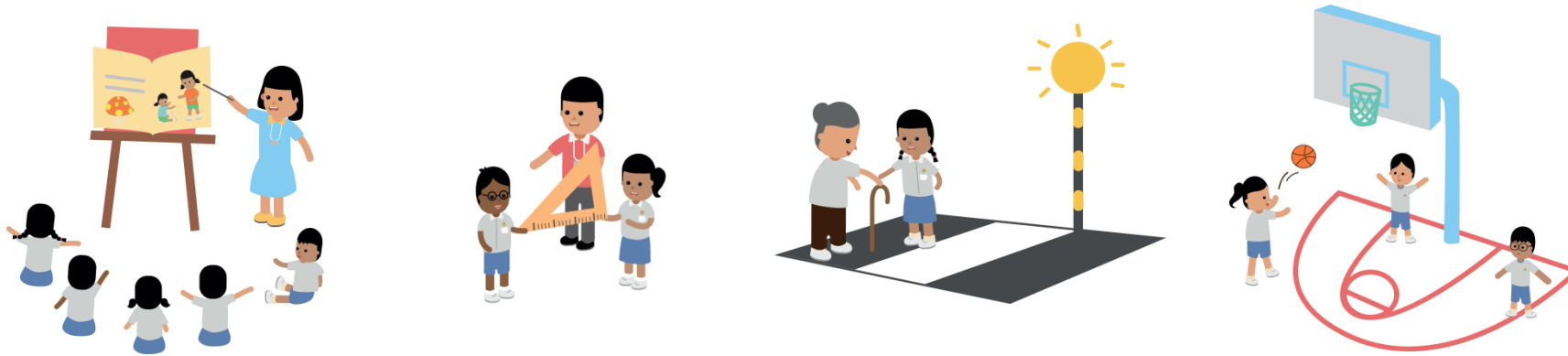
PROVIDE OPPORTUNITIES FOR CHILDREN TO DISCOVER AND DEVELOP THEIR STRENGTHS & INTERESTS

- Diversified school landscape
- Multiple pathways at various stages



THE PSLE CHANGES ARE PART OF A BIGGER STORY

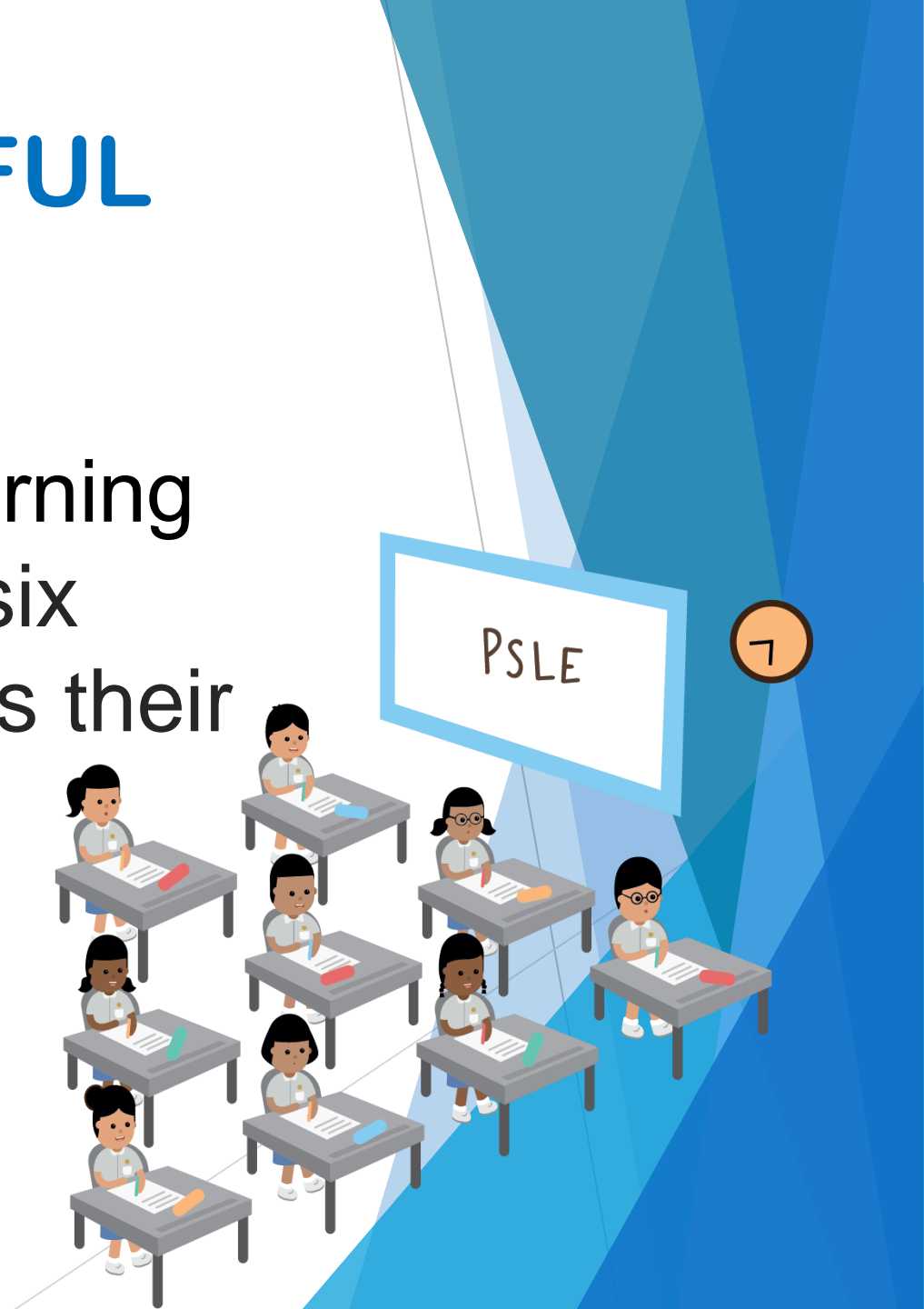
Over the years, MOE have been fine-tuning the education system to help our students discover and develop their strengths and interests while moving away from an over-emphasis on academic results. This will better enable them to lead fulfilling lives.



The changes to the PSLE scoring and S1 posting are another step in this direction.

THE PSLE REMAINS A USEFUL CHECKPOINT

It gauges the level of students' learning in the core subjects at the end of six years of primary school and guides their future choices.



WHAT THE NEW PSLE SCORING SYSTEM AIMS TO DO

- Reduce fine differentiation of students at a young age based on exam scores.
- Recognise a student's level of achievement in each subject, regardless of how his peers have done.



HOW PSLE SCORING WORKS



STUDENTS WITH SIMILAR SCORES IN EACH SUBJECT WILL BE GROUPED INTO THE SAME ACHIEVEMENT LEVEL

- There will be 8 Achievement Levels (ALs), with AL1 being the best.
- A student's AL for each subject will reflect his level of achievement, rather than how he has performed relative to his peers.

PER SUBJECT

AL 1
(BEST)

AL 2

AL 3

AL 4

AL 5

AL 6

AL 7

AL 8
(UNGRADED)

WHY 8 ACHIEVEMENT LEVELS?

- This offers a good balance.
- It reduces fine differentiation between students while still giving parents and educators a gauge of a student's progress at the end of primary school.
- Students can then be matched to suitable academic programmes in secondary schools.

PER SUBJECT

AL 1
(BEST)

AL 2

AL 3

AL 4

AL 5

AL 6

AL 7

AL 8
(UNGRADED)

REFERENCE RAW MARK RANGES

- To guide school-based assessments, we will provide reference raw mark ranges for each AL.
- These are based on learning objectives of the curriculum.

Considerations

- To have educationally meaningful differentiation of students.
- At the top ALs, the ranges are narrower as the PSLE is designed to show what students can do – on average, about half of the students will score AL4 or better.

AL	RAW MARK RANGE
1	≥ 90
2	85 – 89
3	80 – 84
4	75 – 79
5	65 – 74
6	45 – 64
7	20 – 44
8	< 20

FOUNDATION-LEVEL SUBJECTS WILL ALSO BE SCORED ON ACHIEVEMENT LEVELS

- Foundation-level subjects are designed to support a small number of students who may not be able to cope with Standard-level subjects.
- This enables them to focus on building up strong fundamentals so that they are better prepared for secondary school.
- This way, the student will also build confidence to pursue learning at a level suitable for them.

Grades for Foundation	Foundation Raw Mark Range	Equivalent Standard Level AL
A	75 - 100	6
B	30 - 74	7
C	< 30	8



FROM T-SCORE TO WIDER SCORING BANDS

- The PSLE Score replaces the T-score aggregate.
- It is obtained by adding the ALs of four subjects.
- The PSLE Score ranges from 4 to 32, with 4 being the best possible score.
- Students will be placed in secondary school courses based on their overall PSLE score – Express, Normal (Academic) or Normal (Technical).



ENGLISH	AL3
MOTHER TONGUE	AL2
MATHEMATICS	AL1
SCIENCE	AL2
<hr/>	
PSLE SCORE: 8	

PLACEMENT OUTCOME	PSLE SCORE
EXPRESS	4 – 20
EXPRESS / N(A) OPTION	21 – 22
N(A)	23 – 24
N(A) / N(T) option	25
N(T)	26-30, with AL7 or better in both EL and MA

AL	RAW MARK RANGE
1	≥ 90
2	85 – 89
3	80 – 84
4	75 – 79
5	65 – 74
6	45 – 64
7	20 – 44
8	< 20

SCORING OF FOUNDATION SUBJECTS FOR S1 POSTING

- A student's PSLE Score is the sum of the four AL scores across his/her Standard and Foundation subjects.
- Students taking Foundation subjects are eligible for the Express Course, as long as they meet the course placement criteria.
- With Full Subject-based Banding in secondary schools, students may also take subjects at a higher level for those that they are strong in.



Grades for Foundation	Foundation Raw Mark Range	Equivalent Standard Level AL
A	75 - 100	6
B	30 - 74	7
C	< 30	8

ENGLISH	AL3
FOUNDATION MOTHER TONGUE	ALB
FOUNDATION MATHEMATICS	ALB
SCIENCE	AL5

PSLE SCORE: 22

PLACEMENT OUTCOME	PSLE SCORE
EXPRESS	4 – 20
EXPRESS / N(A) option	21 – 22
N(A)	23 – 24
N(A) / N(T) option	25
N(T)	26 – 30, with AL7 or better in both EL and MA

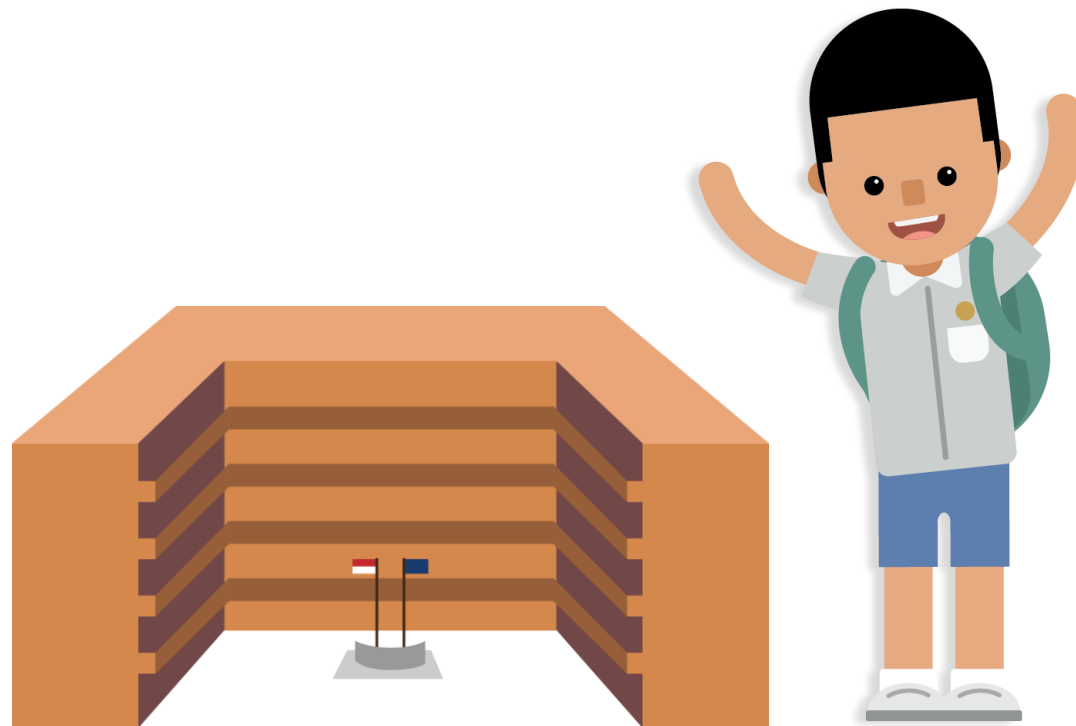
WHAT REMAINS

- ▶ Same 4 subjects are tested, and scores are awarded to guide students' choices for the next stage of their education journey
- ▶ **Subject curriculum** will be continually updated. This is not related to the PSLE scoring and S1 posting changes.

WHAT CHANGES

- ▶ The T-score Aggregate will be replaced by the PSLE Score, to reduce the fine differentiation of our students at a young age based on exam scores.
- ▶ A student's AL for each subject **will reflect his own achievement**, rather than how he has performed relative to his peers.

HOW S1 POSTING WORKS



HOW POSTING WILL WORK

The **PSLE Score** will be the **first criterion** for posting.

If 2 students with the same **PSLE Score** vie for a place in a school, the following tie-breakers will be used.

1. CITIZENSHIP

(Singapore Citizens, Permanent Residents,
then International Students)

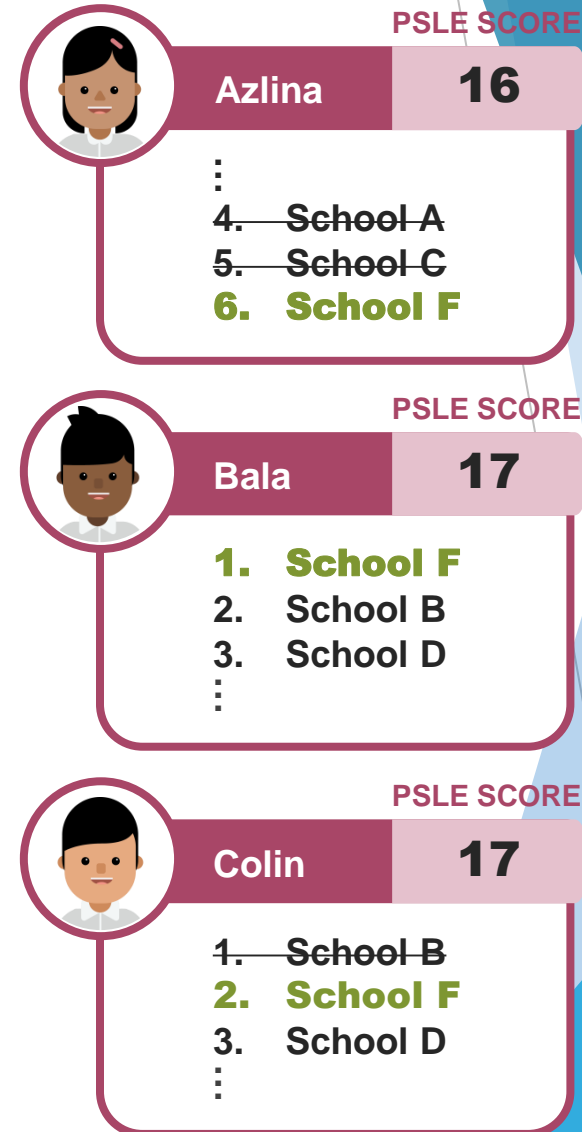
2. CHOICE ORDER OF SCHOOLS (NEW)

3. COMPUTERISED BALLOTING



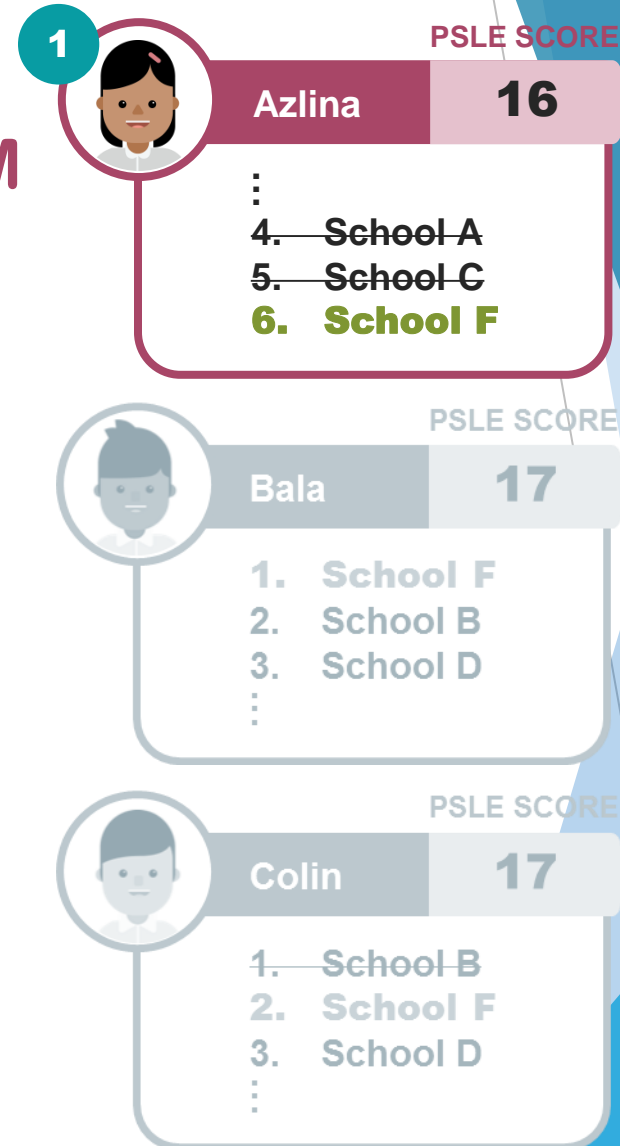
CHOICE ORDER IN THE NEW SYSTEM

- Three Singaporean students have chosen School F as one of their choices, but there are only 2 places left in the school.
- Azlina and Colin were not successfully posted to schools higher in their choices.



CHOICE ORDER IN THE NEW SYSTEM

- Places are allocated based on PSLE Scores first, so Azlina is allocated a place (similar to today).



CHOICE ORDER IN THE NEW SYSTEM

- Bala and Colin have the same PSLE Score.
- To decide who is allocated the remaining space, tie-breakers will be used between Bala and Colin.
- Bala placed School F as a higher choice compared to Colin, so Bala will be allocated the remaining place in School F.

1

PSLE SCORE

Azlina 16

⋮

4. School A

5. School C

6. School F

2

PSLE SCORE

Bala 17

1. **School F**

2. School B

3. School D

⋮

PSLE SCORE

Colin 17

1. School B

2. **School F**

3. School D

⋮

CHOICE ORDER OF SCHOOLS TO MATTER MORE

WITH BROADER SCORING BANDS:

- More students will have the same PSLE Score.
- Schools will be less differentiated based on cut-off points.

WHY CHOICE?

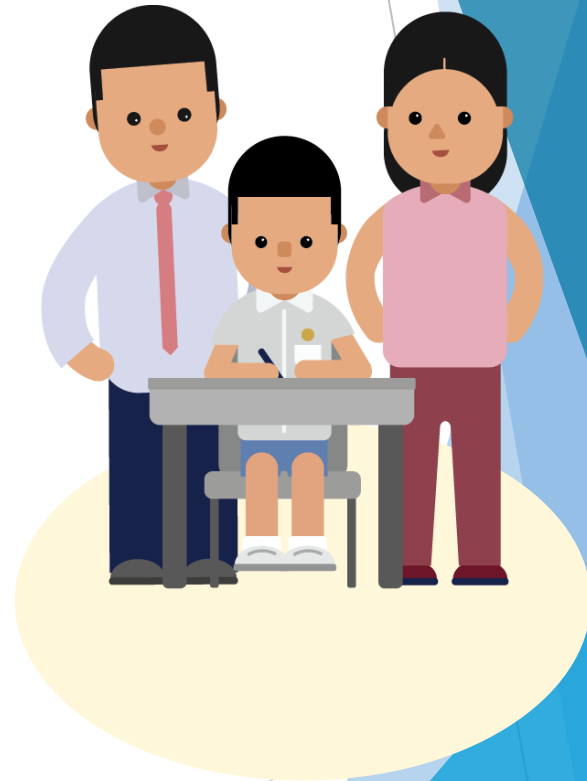
We recognise that families have different considerations when choosing secondary schools, for example, the school's ethos, culture, programmes and CCAs, as well as distance between the school and home.



Academic merit remains the **first criterion** for secondary school posting. Choice order will be a new tie-breaker.

NEW SYSTEM

- ▶ Choice order is introduced as a new tie-breaker to recognise the different considerations that families have in making school choices.
- ▶ To guide families, MOE will provide information on each school's unique programmes and indicative cut-off points.

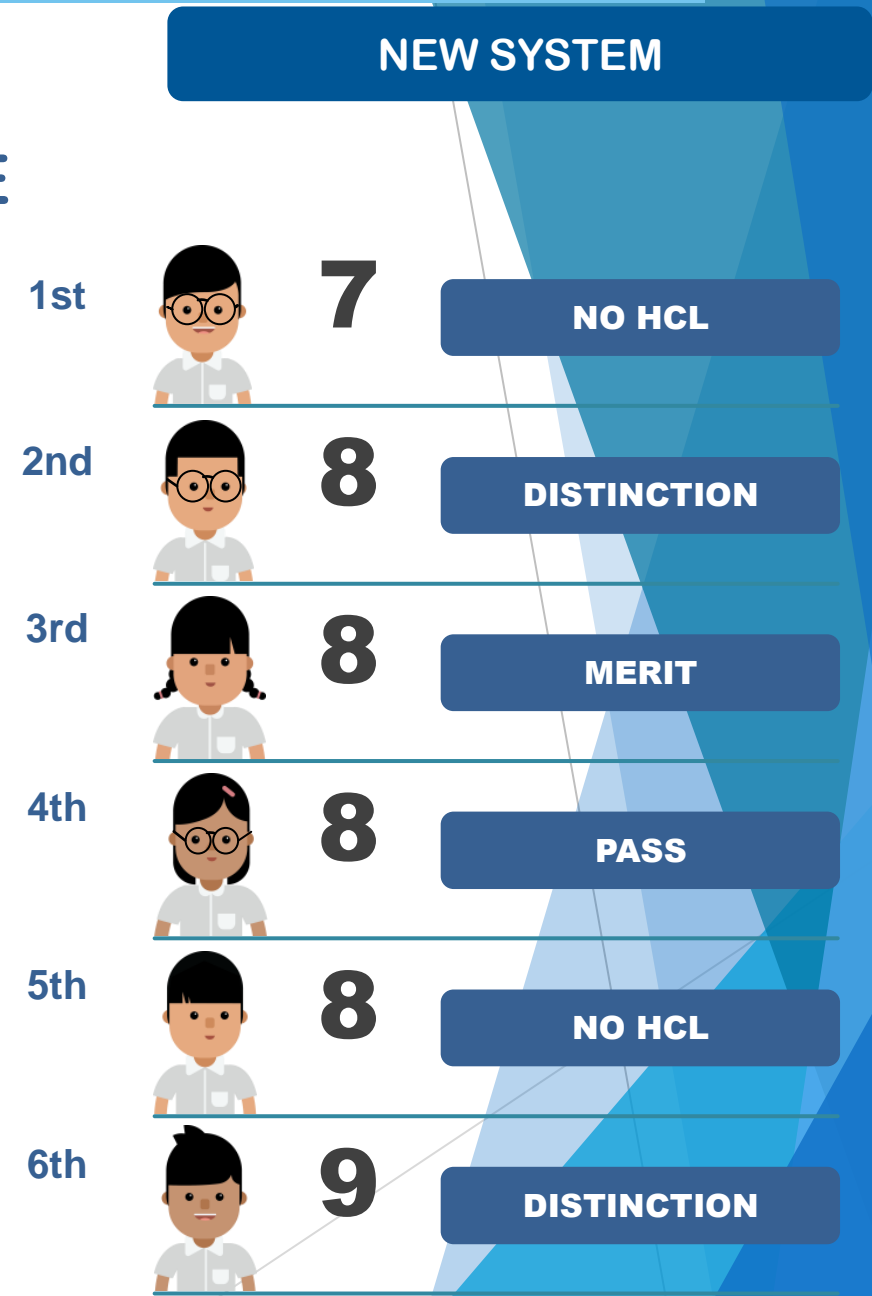


USE OF HCL FOR ADMISSION INTO SAP SCHOOLS

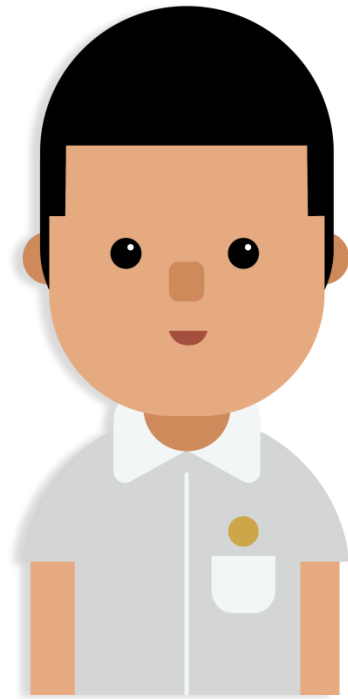


THIS HCL POSTING ADVANTAGE FOR ENTRY TO SAP SCHOOLS WILL CONTINUE

- Students will be ranked taking into account their performance in HCL.
- This posting advantage applies before the tie-breakers for S1 posting.



ELIGIBILITY FOR SECONDARY SCHOOL HIGHER MOTHER TONGUE LANGUAGE (HMTL)



ELIGIBILITY FOR HMTL IN SECONDARY SCHOOLS

- The eligibility criteria for taking HMTL is intended to ensure that students can cope with the higher academic load, and takes reference from the current criteria.

ELIGIBILITY CRITERIA FOR SECONDARY SCHOOL HMTL

(i) PSLE Score of 8 or better

OR

(ii) PSLE Score of 9 to 14 inclusive; and attain

- AL1 / AL2 in MTL or
- Distinction / Merit in HMTL

- For students who do not meet the above criteria, secondary schools will continue to have the flexibility to offer HMTL to students, if they are assessed to have high ability and interest in MTL and are able to take HMTL without affecting their performance in other subjects.

What is DSA-Sec?

Direct School Admission for secondary schools (DSA-Sec) allows students to apply to some schools before taking the PSLE.

Students apply based on their talent in sports, CCAs and specific academic areas.

If your child is admitted to a secondary school through DSA-Sec, they are not allowed to:

- Submit school choices during the Secondary 1 (S1) posting process.
- Transfer to another school. They must commit to their chosen school for the duration of the programme.

DIRECT SCHOOL ADMISSION

DSA-SEC

Who can apply

Primary 6 students can apply for DSA-Sec based on a wide-range of talents, including:

- Sports and games
- Visual, literary and performing arts
- Debate and public speaking
- Science, mathematics and engineering
- Languages and humanities
- Uniformed groups
- Leadership (for example, prefects)

DIRECT SCHOOL ADMISSION-DSA-SEC

Apply via DSA microsite.

For Year 2022, dates are not released yet. However, you are encouraged to visit the website to find out what are being offered by different schools as of 2021.

<https://beta.moe.gov.sg/secondary/dsa/>

New PSLE Scoring System

The revised PSLE scoring system in 2021 will help your child focus on their learning instead of how they compare to others.



<https://www.moe.gov.sg/microsites/psle-fsbb/psle/main.html>



[How to use SchoolFinder](#)

SchoolFinder

Explore schools based on their distance from your home, locations, CCAs, subjects and programmes offered.



Secondary ▾ Search for a school or keywords e.g. "Admiralty" or "football"

Criteria

[Reset all](#)

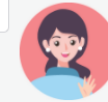
Location



Search for schools near you

Secondary schools

← 1 of 8 →



Showing 152 Secondary schools

Admiralty Secondary School

▶ <https://www.moe.gov.sg/schoolfinder?journey=Secondary%20school>



Question and Answer



Question and Answer

If you have any further questions...

Let us know if you still have any questions by sending me an email.

yeoh_ghim_boon@moe.edu.sg

**Thank you and
have
a good day !**