

Primary 6

Curriculum Briefing



Programme outline

1. Curriculum Briefing (See Information Annex in website)
2. Assessment Matters (See Information Annex in website)
3. Introduction of Form Teachers
4. PSLE matters
5. Direct School Admission matters

Form Teachers

Form Teachers 2022

- ▶ P6A: Mdm Woo Sye Lai
- ▶ P6C: Mdm Norihsani
- ▶ P6D: Mdm Fatimah
- ▶ P6E: Mdm Chua Swan Lynn
- ▶ P6J: Mrs Jasmine Wong
- ▶ P6R: Ms Charmaine Lim and Mdm Nurafizah

PSLE System in 2022

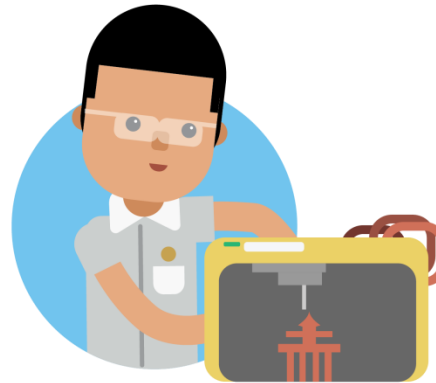
WHAT DO OUR CHILDREN NEED TO THRIVE IN THE FUTURE?



STRONG FOUNDATION

For example:

- Literacy
- Numeracy
- Social-emotional Competencies



21ST CENTURY COMPETENCIES

For example:

- Global awareness
- Critical and Inventive thinking
- Communication and Collaboration



VALUES

For example:

- Resilience
- Integrity
- Care

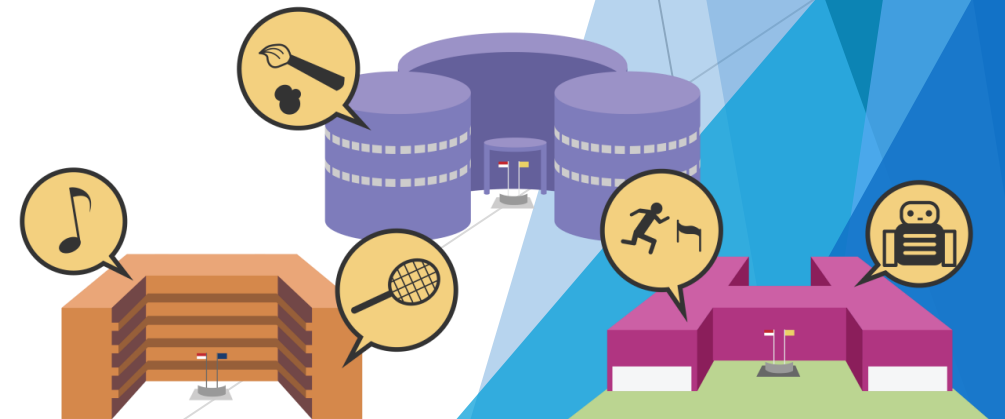
OUR EDUCATION SYSTEM AIMS TO:

NURTURE WELL-ROUNDED INDIVIDUALS

- Develop students holistically in every domain of learning
- Equip students with knowledge, skills, values and competencies for life

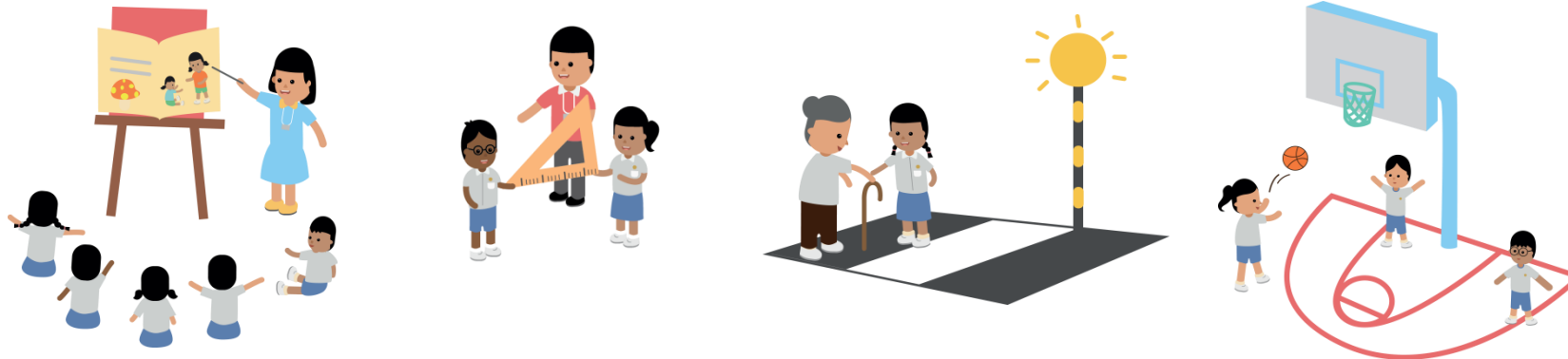
PROVIDE OPPORTUNITIES FOR CHILDREN TO DISCOVER AND DEVELOP THEIR STRENGTHS & INTERESTS

- Diversified school landscape
- Multiple pathways at various stages



THE PSLE CHANGES ARE PART OF A BIGGER STORY

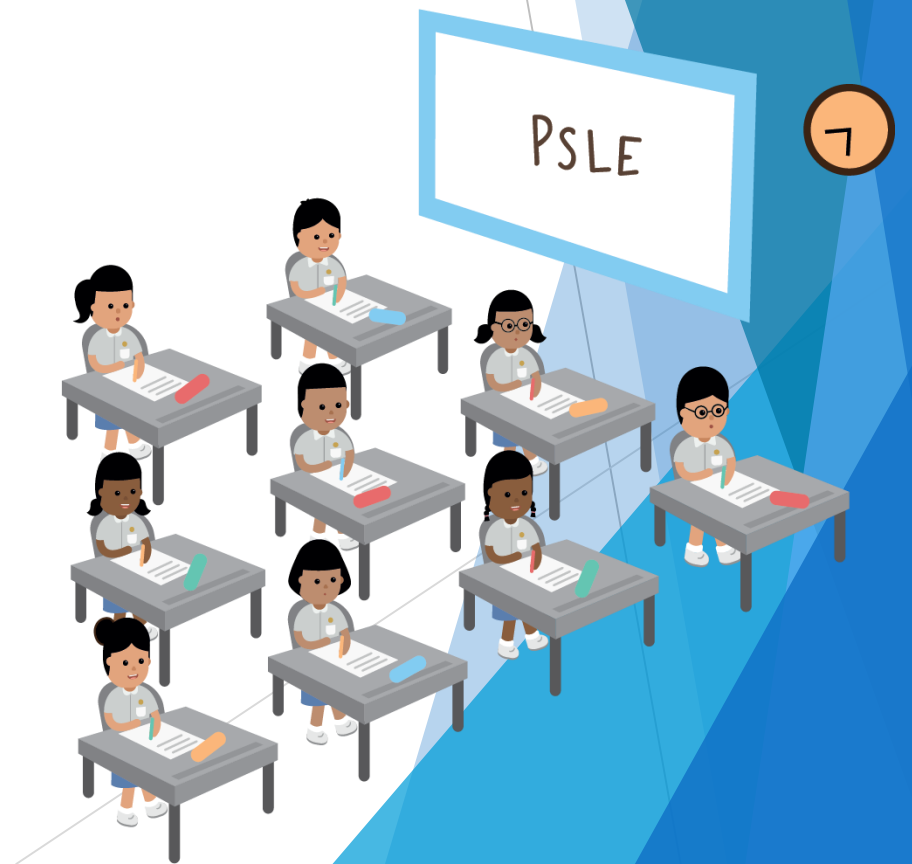
Over the years, we have been fine-tuning the education system to help our students discover and develop their strengths and interests while moving away from an over-emphasis on academic results. This will better enable them to lead fulfilling lives.



The changes to the PSLE scoring and S1 posting are another step in this direction.

THE PSLE REMAINS A USEFUL CHECKPOINT

It gauges the level of students' learning in the core subjects at the end of six years of primary school and guides his future choices.



WHAT THE NEW PSLE SCORING SYSTEM AIMS TO DO

- Reduce fine differentiation of students at a young age based on exam scores.
- Recognise a student's level of achievement in each subject, regardless of how his peers have done.



OVERVIEW

- How PSLE scoring works
- How S1 posting works
- Other issues
- Implementation
- Our hopes for our children



HOW PSLE SCORING WORKS



STUDENTS WITH SIMILAR SCORES IN EACH SUBJECT WILL BE GROUPED INTO THE SAME ACHIEVEMENT LEVEL

- There will be 8 Achievement Levels (ALs), with AL1 being the best.
- A student's AL for each subject will reflect his level of achievement, rather than how he has performed relative to his peers.

PER SUBJECT

AL 1
(BEST)

AL 2

AL 3

AL 4

AL 5

AL 6

AL 7

AL 8
(UNGRADED)

WHY 8 ACHIEVEMENT LEVELS?

- This offers a good balance.
- It reduces fine differentiation between students while still giving parents and educators a gauge of a student's progress at the end of primary school.
- Students can then be matched to suitable academic programmes in secondary schools.

PER SUBJECT
AL 1 (BEST)
AL 2
AL 3
AL 4
AL 5
AL 6
AL 7
AL 8 (UNGRADED)

REFERENCE RAW MARK RANGES

- To guide school-based assessments, we will provide reference raw mark ranges for each AL.
- These are based on learning objectives of the curriculum.

Considerations

- To have educationally meaningful differentiation of students.
- At the top ALs, the ranges are narrower as the PSLE is designed to show what students can do – on average, about half of the students will score AL4 or better.

AL	RAW MARK RANGE
1	≥ 90
2	85 – 89
3	80 – 84
4	75 – 79
5	65 – 74
6	45 – 64
7	20 – 44
8	< 20

FOUNDATION-LEVEL SUBJECTS WILL ALSO BE SCORED ON ACHIEVEMENT LEVELS

- **Foundation-level subjects are designed to support a small number of students who may not be able to cope with Standard-level subjects.**
- **This enables them to focus on building up strong fundamentals so that they are better prepared for secondary school.**
- **This way, the student will also build confidence to pursue learning at a level suitable for them.**

Grades for Foundation	Foundation Raw Mark Range	Equivalent Standard Level AL
A	75 - 100	6
B	30 - 74	7
C	< 30	8

FROM T-SCORE TO WIDER SCORING BANDS

- The PSLE Score replaces the T-score aggregate.
- It is obtained by adding the ALs of four subjects.
- The PSLE Score ranges from 4 to 32, with 4 being the best possible score.
- Students will be placed in secondary school courses based on their overall PSLE score – Express, Normal (Academic) or Normal (Technical).



ENGLISH	AL3
MOTHER TONGUE	AL2
MATHEMATICS	AL1
SCIENCE	AL2

PSLE SCORE: 8

PLACEMENT OUTCOME	PSLE SCORE
EXPRESS	4 – 20
EXPRESS / N(A) OPTION	21 – 22
N(A)	23 – 24
N(A) / N(T) option	25
N(T)	26-30, with AL7 or better in both EL and MA

SCORING OF FOUNDATION SUBJECTS FOR S1 POSTING

- A student's PSLE Score is the sum of the four AL scores across his/her Standard and Foundation subjects.
- Students taking Foundation subjects are eligible for the Express Course, as long as they meet the course placement criteria.
- With Full Subject-based Banding in secondary schools, students may also take subjects at a higher level for those that they are strong in.



ENGLISH	AL3
FOUNDATION MOTHER TONGUE	ALB
FOUNDATION MATHEMATICS	ALB
SCIENCE	AL5

PSLE SCORE: 22

PLACEMENT OUTCOME	PSLE SCORE
EXPRESS	4 – 20
EXPRESS / N(A) option	21 – 22
N(A)	23 – 24
N(A) / N(T) option	25
N(T)	26 – 30, with AL7 or better in both EL and MA

WHAT REMAINS

- ▶ Same 4 subjects are tested, and scores are awarded to guide students' choices for the next stage of their education journey
- ▶ **Subject curriculum** will be continually updated. This is not related to the PSLE scoring and S1 posting changes.

WHAT CHANGES







- ▶ The T-score Aggregate will be replaced by the PSLE Score, to reduce the fine differentiation of our students at a young age based on exam scores.
- ▶ A student's AL for each subject **will reflect his own achievement**, rather than how he has performed relative to his peers.

USE OF HCL FOR ADMISSION INTO SAP SCHOOLS

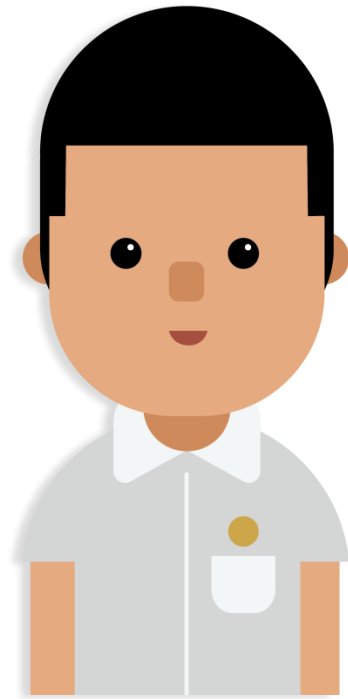


THIS HCL POSTING ADVANTAGE FOR ENTRY TO SAP SCHOOLS WILL CONTINUE

- Students will be ranked taking into account their performance in HCL.
- This posting advantage applies before the tie-breakers for S1 posting.

1st		7	NO HCL
2nd		8	DISTINCTION
3rd		8	MERIT
4th		8	PASS
5th		8	NO HCL
6th		9	DISTINCTION

ELIGIBILITY FOR SECONDARY SCHOOL HIGHER MOTHER TONGUE LANGUAGE (HMTL)



ELIGIBILITY FOR HMTL IN SECONDARY SCHOOLS

- The eligibility criteria for taking HMTL is intended to ensure that students can cope with the higher academic load, and takes reference from the current criteria.

ELIGIBILITY CRITERIA FOR SECONDARY SCHOOL HMTL

(i) PSLE Score of 8 or better

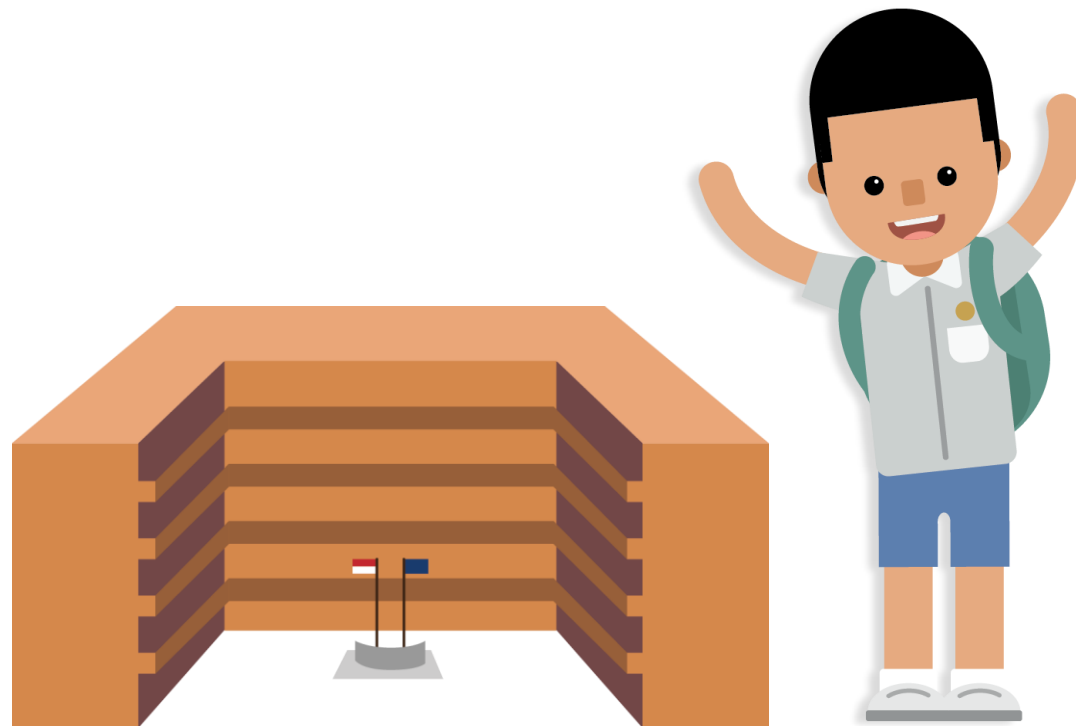
OR

(ii) PSLE Score of 9 to 14 inclusive; and attain

- AL1 / AL2 in MTL or
- Distinction / Merit in HMTL

- For students who do not meet the above criteria, secondary schools will continue to have the flexibility to offer HMTL to students, if they are assessed to have high ability and interest in MTL and are able to take HMTL without affecting their performance in other subjects.

HOW S1 POSTING WORKS



HOW POSTING WILL WORK

The **PSLE Score** will be the **first criterion** for posting.

If 2 students with the same **PSLE Score** vie for a place in a school, the following tie-breakers will be used.

1. **CITIZENSHIP**

(Singapore Citizens, Permanent Residents,
then International Students)


2. **CHOICE ORDER OF SCHOOLS** **(NEW)**

3. **COMPUTERISED BALLOTING**




CHOICE ORDER IN THE NEW SYSTEM


- Suppose the three Singaporean students have chosen School F as one of their choices, but there are only 2 places left in the school.
- Azlina and Colin were not successfully posted to schools higher in their choices.

 **Azlina** **PSLE SCORE 16**

⋮
4. School A
5. School C
6. School F

 **Bala** **PSLE SCORE 17**

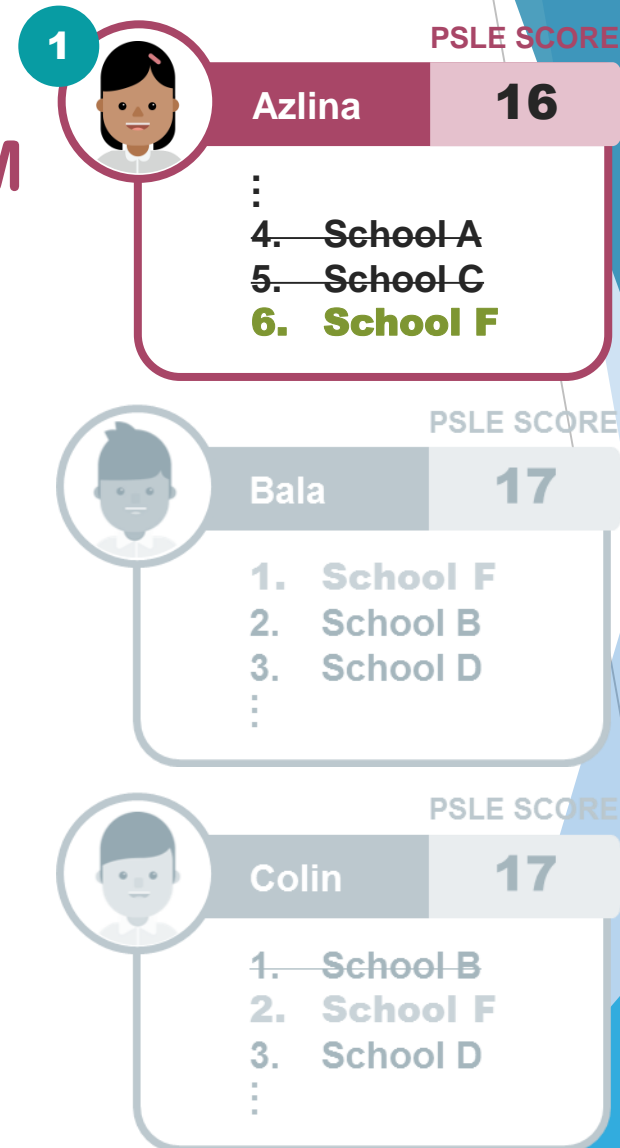
1. School F
2. School B
3. School D
⋮

 **Colin** **PSLE SCORE 17**

1. School B
2. School F
3. School D
⋮

CHOICE ORDER IN THE NEW SYSTEM

- Places are allocated based on PSLE Scores first, so Azlina is allocated a place (similar to today).



CHOICE ORDER IN THE NEW SYSTEM

- Bala and Colin have the same PSLE Score.
- To decide who is allocated the remaining space, tie-breakers will be used between Bala and Colin.
- Bala placed School F as a higher choice compared to Colin, so Bala will be allocated the remaining place in School F.

1

PSLE SCORE

Azlina 16

⋮

4. School A

5. School C

6. School F

2

PSLE SCORE

Bala 17

1. **School F**

2. School B

3. School D

⋮

PSLE SCORE

Colin 17

1. School B

2. **School F**

3. School D

⋮

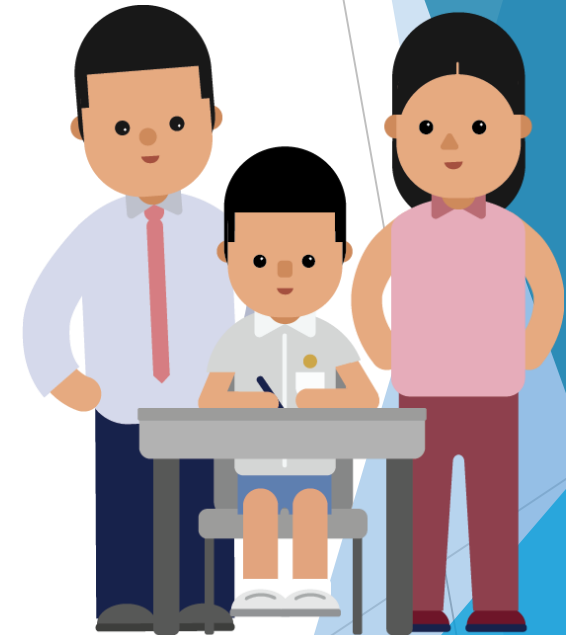
CHOICE ORDER OF SCHOOLS TO MATTER MORE

WITH BROADER SCORING BANDS:

- More students will have the same PSLE Score.
- Schools will be less differentiated based on cut-off points.

WHY CHOICE?

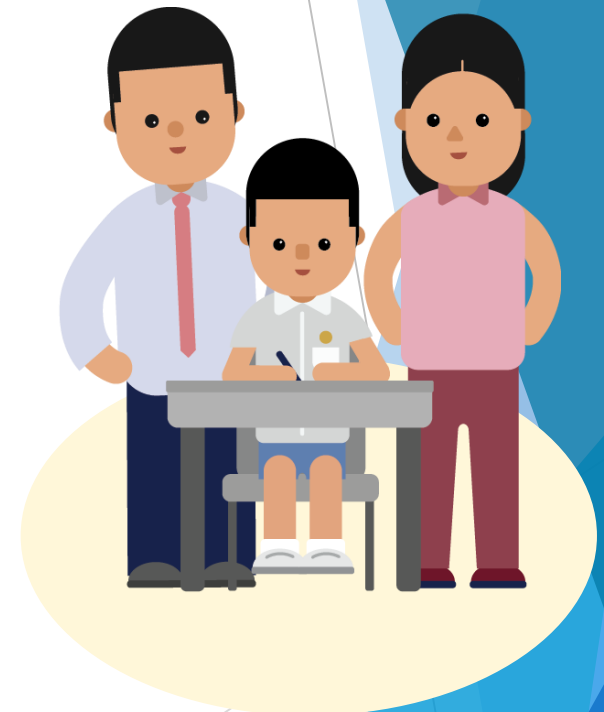
We recognise that families have different considerations when choosing secondary schools, for example, the school's ethos, culture, programmes and CCAs, as well as distance between the school and home.



Academic merit remains the **first criterion** for secondary school posting. Choice order will be a new tie-breaker.

NEW SYSTEM

- ▶ Choice order is introduced as a new tie-breaker to recognise the different considerations that families have in making school choices.
- ▶ To guide families, we will provide information on each school's unique programmes and indicative cut-off points.



DIRECT SCHOOL ADMISSION- DSA-SEC

What is DSA-Sec?

Direct School Admission for secondary schools (DSA-Sec) allows students to apply to some schools before taking the PSLE.

Students apply based on their talent in sports, CCAs and specific academic areas.

If your child is admitted to a secondary school through DSA-Sec, they are not allowed to:

- Submit school choices during the Secondary 1 (S1) posting process.
- Transfer to another school. They must commit to their chosen school for the duration of the programme.

DIRECT SCHOOL ADMISSION- DSA-SEC

Who can apply

Primary 6 students can apply for DSA-Sec based on a wide-range of talents, including:

- Sports and games
- Visual, literary and performing arts
- Debate and public speaking
- Science, mathematics and engineering
- Languages and humanities
- Uniformed groups
- Leadership (for example, prefects)

DIRECT SCHOOL ADMISSION- DSA-SEC

2021	Talent Area
DSA-SEC OUTCOME (14 different schools)	<ul style="list-style-type: none">• Subject areas: Chinese and Science.• Leadership• Uniformed-Group• Sports: Taekwando• Visual Arts

DIRECT SCHOOL ADMISSION- DSA-SEC

Apply via DSA microsite.

For Year 2022, dates are not released yet. However, you are encouraged to visit the website to find out what are being offered by different schools as of 2021.

<https://beta.moe.gov.sg/secondary/dsa/>

**PARENTS
TEACHERS
COMMUNITY**

**LET US WRITE THE NEXT CHAPTER
OF THIS STORY TOGETHER...**



OUR HOPES FOR OUR CHILDREN

LOOKING BEYOND ACADEMIC RESULTS



Question and Answer

**Thank you and
have
a good day !**